



**Badger Meter**

## Recordall® Industrial Meters

Nutating Disc Meter, Bronze and Thermoplastic

### DESCRIPTION

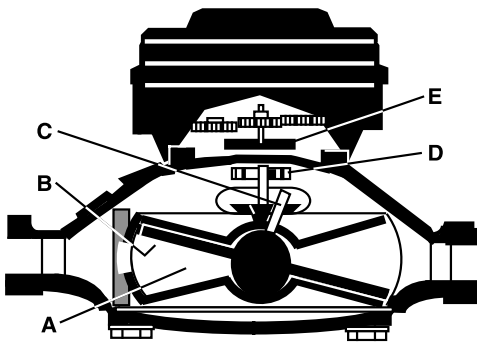
The Badger Meter Recordall (RCDL) positive displacement meters are one of the most cost effective methods in metering industrial fluids. The RCDL meter has a simple, efficient design for high accuracy and repeatability over the entire meter flow range.

Available in five sizes, 1/2" through 2" for flows up to 170 gpm, these meters are extremely rugged and reliable. Maintenance is seldom required, but if necessary, takes only a few minutes. All parts are designed and built of materials that meet your application requirements and provide an enduring and a trouble-free, precision flow meter.

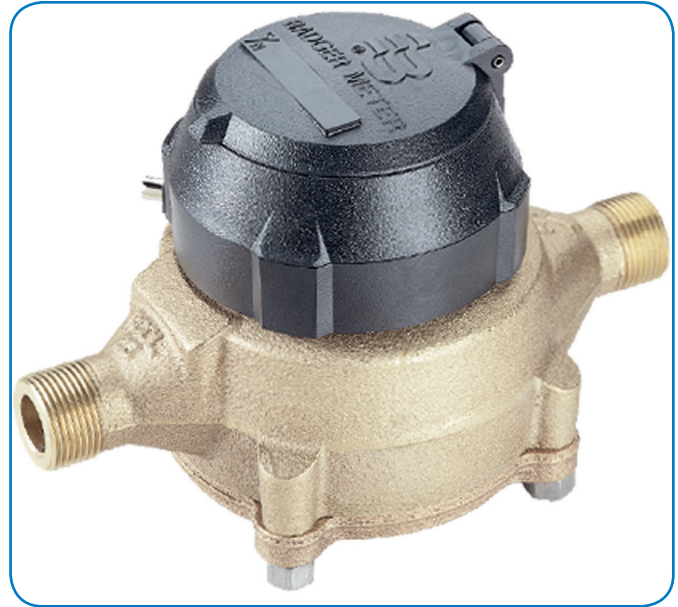
To complement the RCDL meter line, Badger Meter offers a complete line of accessories that includes totalizers, electromechanical and electronic transmitters, rate of flow indicators and batch/process controllers.

### OPERATION

The metering principle, known as positive displacement, is based on the continuous filling and discharging of the measuring chamber. Controlled clearances between the disc and the chamber provide precise measurement of each volume cycle. As the disc nutates, the center spindle rotates a magnet. The movement of the magnet is sensed through the meter wall by a follower magnet or by various sensors. Each revolution of the magnet is equivalent to a fixed volume of fluid, which is converted to any engineering unit of measure for totalization, indication or process control.



Liquid flowing through the meter chamber (A) causes a disc (B) to nutate or wobble. This motion, in turn, results in the rotation of a spindle (C) and drive magnet (D). Rotation is transmitted through the wall of the meter to a second magnet (E) or varied style of sensor pickup.



### FEATURES

- Wide flow range
- Rugged bronze or thermoplastic housing
- Models 25 and 70—Bronze: 250° F option
- Easily maintained without removing from line
- Durable components for minimal maintenance
- Wide range of compatible accessories

### PERFORMANCE

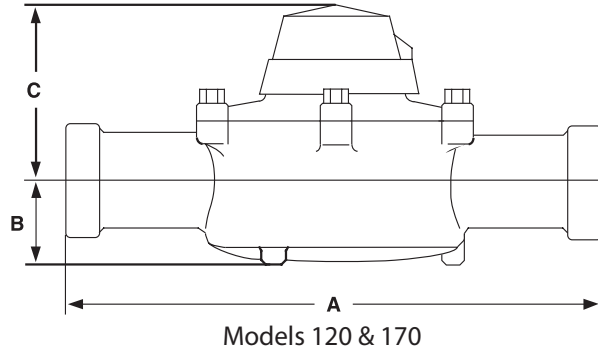
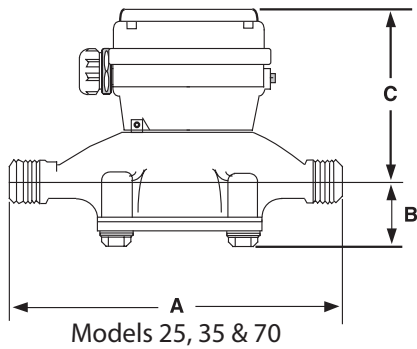
- Accuracy:  $\pm 1.5\%$
- Repeatability:  $\pm 0.5\%$
- Max. Operating Pressure: 150 psi
- Maximum Operating Temperature:  
Plastic housing: 100° F  
Bronze housing: 120° F

## Product Data Sheet



Jamieson Equipment Company  
www.jamiesonequipment.com  
toll free 800.875.0280

## SPECIFICATIONS



Meter Model	Meter Size	Housing Material	Dimensions in Inches without Register			Flow Rate in Gallons		
			A Meter Length	B Centerline to Base	Meter Length with Conn.	Cold Liquids 32...120° F	Chemicals & Oils 32...250° F (BZ) 32...100° F (PL)	Approx. Weight
M25	5/8"	BZ or PL	7-1/2"	1-3/8"	12-7/16"	1/2...25 gpm	1...25 gpm	5 lb
M25	3/4"	BZ or PL	7-1/2"	1-3/8"	12-5/8"	1/2...30 gpm	1...30 gpm	5 lb
M35	3/4"	BZ	9"	1-3/4"	14-1/8"	3/4...35 gpm	N/A	6 lb
M40	1"	PL	10-3/4"	2-1/4"	16-3/16"	3/4...50 gpm	N/A	5 lb
M70	1"	BZ	10-3/4"	2-1/4"	16-5/8"	1...70 gpm	5...70 gpm	12 lb
M120	1-1/2"	BZ	12-5/8"	2-5/8"	19-3/4"	2...120 gpm	*See Note	20 lb
M170	2"	BZ	15-1/4"	3-3/8"	22-7/8"	2...170 gpm	N/A	30 lb

BZ = Bronze; PL = Plastic  
NPT connection set assemblies available.

N/A = Not available in high temperature/chemical option.  
\*Note: Available for chemicals or fluids not to exceed 110° F (43° C)

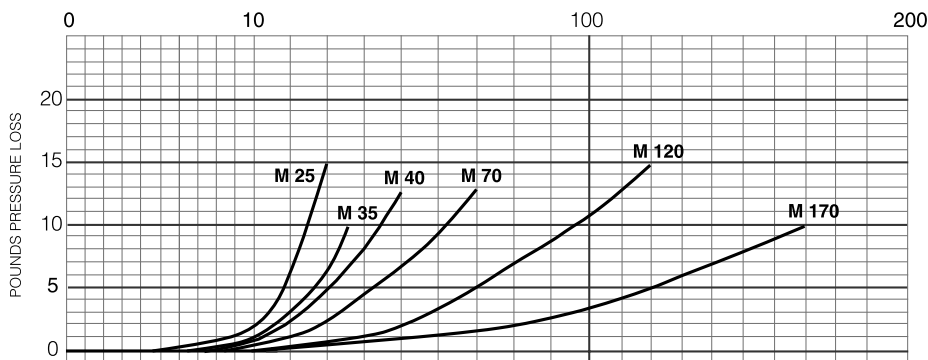
Meter Size	Height Dimensions in Inches with Register and Accessories					
	With Non Resettable Register	With Transmitter	With MS-ER1 Transmitter	With ECA Transmitter	With 258 Register	With Series 76 Register
5/8" & 5/8 x 3/4"	5-3/4"	7-3/8"	11-1/4"	9-3/8"	8"	15-1/4"
3/4"	6-1/8"	7-3/4"	11-5/8"	9-3/8"	8-3/8"	15-5/8"
1"	7-1/2"	9-1/8"	13"	11-3/16"	9-3/4"	17"
1-1/2"	9-1/8"	10-3/8"	14-1/4"	12-3/4"	11"	18-1/4"
2"	10-3/4"	12-1/4"	16-1/8"	14-3/8"	12-7/8"	20-1/8"

## MATERIALS OF CONSTRUCTION

	Cold Liquid Units	High Temp. and/or Chemical Units Models 25 & 70
Housing	BZ or PL	BZ: 250° F, PL: 100° F
Chamber	Noryl	LCP
Disc	SAN	LCP
Crossbar	Nylon	Ultem
Magnetic Assembly	Nylon	Ultem
Chamber Retainer	Polyethylene	Metal Clip
Screen	Polypropylene	None

## PRESSURE LOSS CHART

Rate of Flow in Gallons Per Minute



Recordall is a registered trademark of Badger Meter, Inc. Other trademarks appearing in this document are the property of their respective entities.

Due to continuous research, product improvements and enhancements, Badger Meter reserves the right to change product or system specifications without notice, except to the extent an outstanding contractual obligation exists. © 2013 Badger Meter, Inc. All rights reserved.

Legacy Document Number: ITB-072



Jamieson Equipment Company  
www.jamiesonequipment.com  
toll free 800.875.0280